
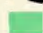


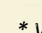
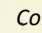
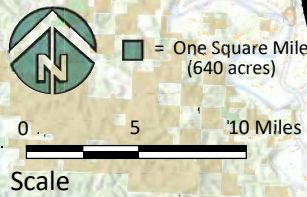
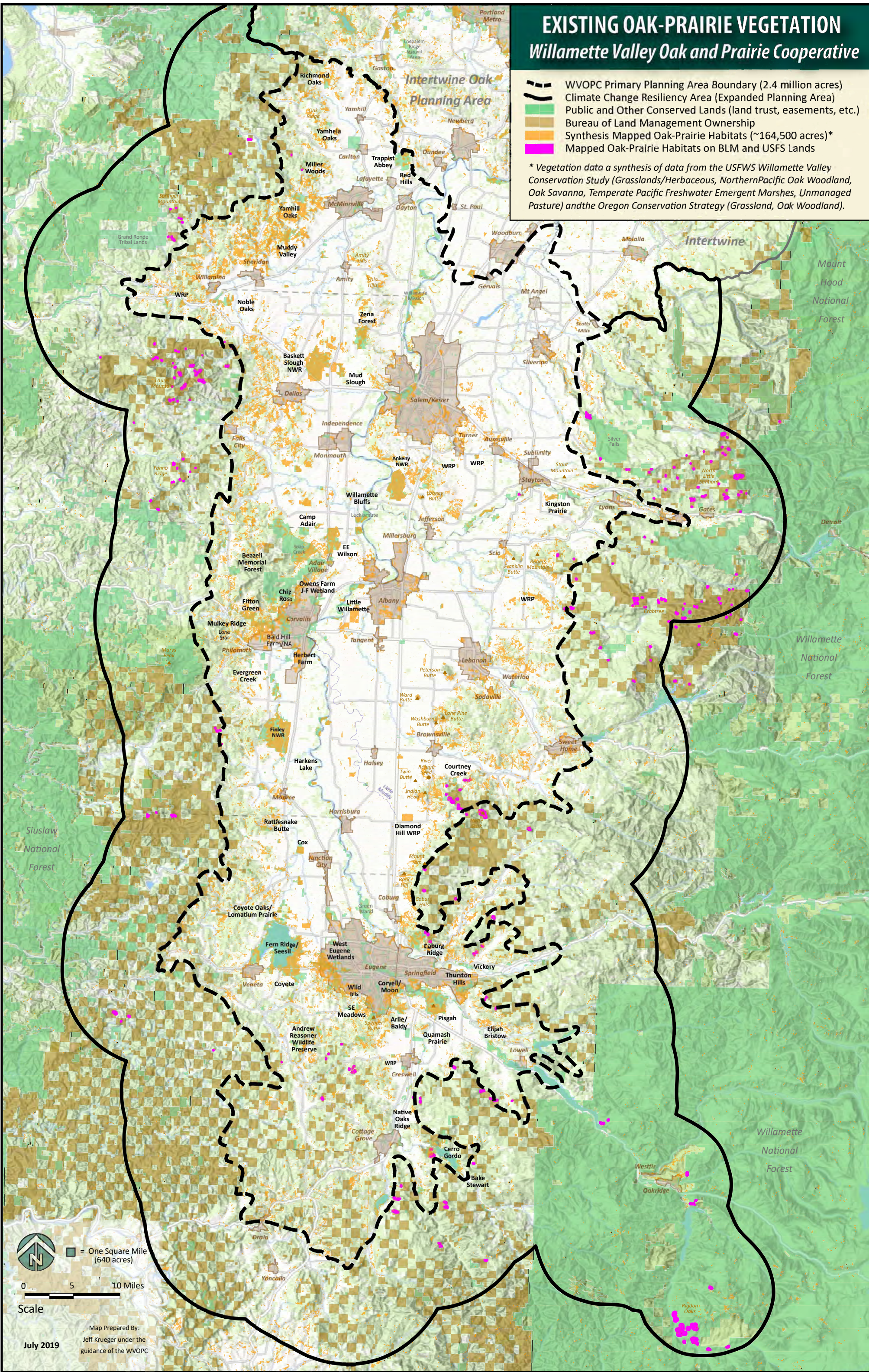


EXISTING OAK-PRAIRIE VEGETATION

Willamette Valley Oak and Prairie Cooperative

-  WVOPC Primary Planning Area Boundary (2.4 million acres)
-  Climate Change Resiliency Area (Expanded Planning Area)
-  Public and Other Conserved Lands (land trust, easements, etc.)
-  Bureau of Land Management Ownership
-  Synthesis Mapped Oak-Prairie Habitats (~164,500 acres)*
-  Mapped Oak-Prairie Habitats on BLM and USFS Lands

* Vegetation data a synthesis of data from the USFWS Willamette Valley Conservation Study (Grasslands/Herbaceous, Northern Pacific Oak Woodland, Oak Savanna, Temperate Pacific Freshwater Emergent Marshes, Unmanaged Pasture) and the Oregon Conservation Strategy (Grassland, Oak Woodland).



Map Prepared By:
 Jeff Krueger under the
 guidance of the WVOPC

July 2019